

Service bulletin

Measuring and adjusting CO₂



BOSCH

Introduction

NOTE: The CO₂ reading is affected by the ambient temperature. The CO₂ reading is not accurate if the ambient temperature is below 5 °C (41 °F) or above 35 °C (95 °F).

Tools needed:

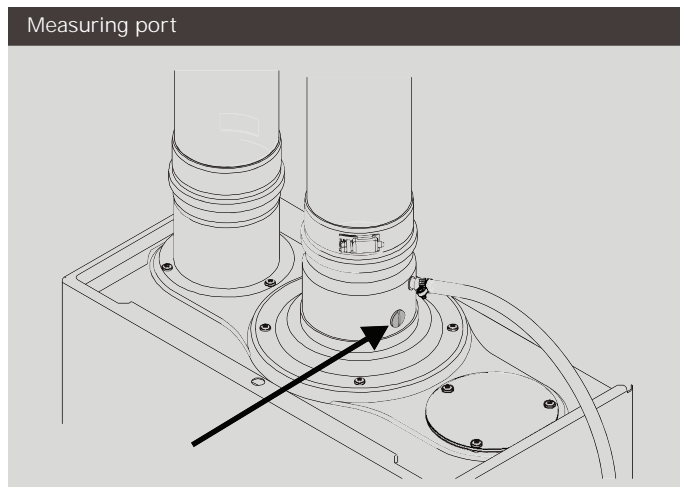
- 7 mm hex key
- Flat head screw driver
- Phillips head screw driver

Measure gas pressure

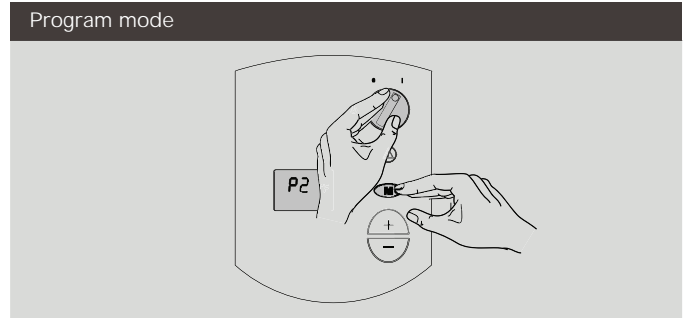
- One factor that may affect CO₂ reading is the gas pressure. The CO₂ reading is not accurate if the gas pressure is below 1 bar (14.5 psi) or above 1.5 bar (21.75 psi).

Preparation

1. Turn the CO₂ sensor to the "OFF" position. The CO₂ sensor is located on the front panel of the control panel.



2. Turn the CO₂ sensor to the "ON" position. The CO₂ sensor is located on the front panel of the control panel.



Measuring CO₂

3. Press the "P2" button to enter the program mode. The CO₂ reading is displayed on the LCD screen.

4. Press the "+" button to increase the CO₂ reading. The CO₂ reading is displayed on the LCD screen.

5. Press the "-" button to decrease the CO₂ reading. The CO₂ reading is displayed on the LCD screen.

Proper CO ₂ readings		
	BUTHERY Ug	LP Gas
AUI jbdh d%	- "+- 0.3 %	%"+"-\$" i
AUI jbdh d&	-") - 0.5 %	%"") - \$" i

