

# Service bulletin

## Replacing control box



# BOSCH

---

### Tools needed:

- ▶ Phillips head screwdriver
- ▶ Needle-nosed pliers

---

### Removing ignition unit

1. Close installer supplied cold water shut off valve to water heater.
2. Remove front cover of heater. (See instructions in the installation manual)
3. Remove single ignition wire connection (to spark electrode) from upper left corner of ignition unit. Unclip wire from bracket on top of ignition unit (425HN models only). (See Fig. 1)
4. Remove multiple wire connector from lower right corner of ignition unit by gently pulling outwards with needle-nosed pliers. (See Fig. 1)
5. Remove screw with ground wire connection from upper right corner of ignition unit. Metal bracket and ignition unit will drop out of heater.
6. Remove ignition unit from metal bracket.

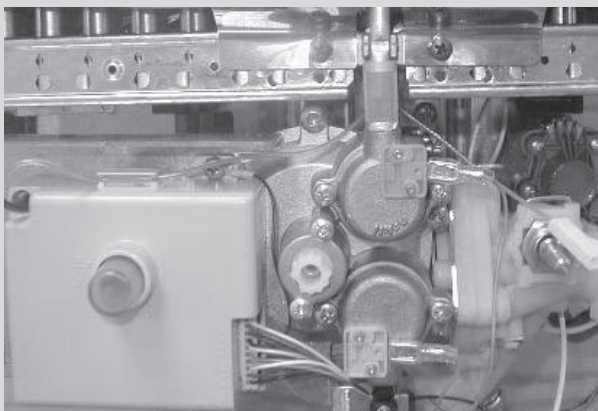
---

### Installing ignition unit

1. Insert tab on lower left of ignition unit into slot in lower left of metal bracket.
2. Mount ignition unit with bracket to heater by inserting screw into upper right hand corner.  
Note: Feed screw through ground wire eyelet with washer before threading through ignition unit to heater. (See Fig. 1)
3. Press multiple wire connector into lower right of ignition unit.
4. Push ignition wire on to single terminal in top left corner of ignition unit. Clip wire into bracket on top of ignition unit (425HN models only).
5. If a replacement hydro generator (black and red lead wires) was sent as a temporary solution for ignition failure, please reinstall original hydro generator, part# 8707406071 (blue and brown lead wires).
6. Install front cover, open cold water supply and return heater to service.

Control box (425HN model shown)

Figure 1



**BBT North America Corporation**

Bosch Group

Bosch Water Heating

340 Mad River Park

Waitsfield, VT 05673

Telephone 800-642-3111

Fax (802) 496-6924

**[techsupport@boschhotwater.com](mailto:techsupport@boschhotwater.com)**