

REPLACING ELECTRO VALVES

MODELS: 1600H, 425HN



WARNING

LP & NG ARE EXTREMELY FLAMMABLE SO TAKE EXTRA PRECAUTIONS WHEN PERFORMING ANY WORK TO THE HEATER

Tools

- Philips head screwdriver
- Pliers
- 8mm or adjustable wrench.

Preparation



This procedure should be performed by a licensed gas technician

Before attempting to replace either electro valve, turn off gas supply to the water heater and turn ON (I) /OFF (O) switch to the OFF (O) position.

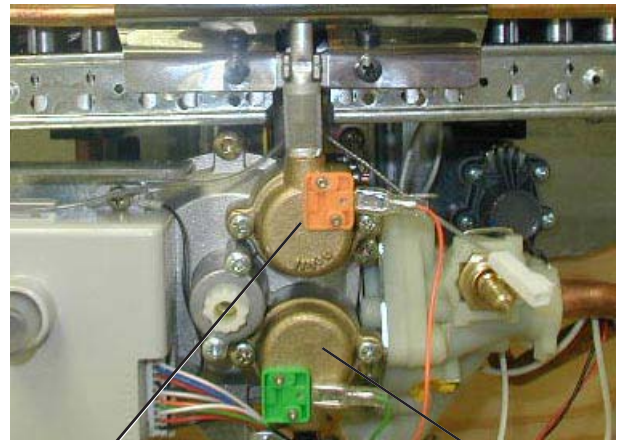
Removing Electrovalve

1. Locate the pilot and burner electro valves on the lower front of the water heater just to the left of the temperature control knob and water valve (See Fig.1).
2. Determine which electro valve is going to be replaced. The upper electro valve (orange) is responsible for the pilot and the lower electro valve (green) is responsible for the burners.
3. Using pliers, disconnect wire at spade connection on electro valve needing replacement.
4. Remove the two Philips head screws on each side of the Electrovalve.
5. Remove the electro valve from the gas valve housing. Be careful not to misplace the rubber o-ring that seals the electro valve to the gas valve. If a new o-ring is provided with new electro valve, discard the original o-ring. **NOTE:** If removing the pilot electro valve, remove the pilot orifice from the top of the electro valve by unscrewing the 8mm orifice nut with appropriate wrench (See Fig. 1). Do not lose the pilot orifice.

Installing electro valve

1. If installing the pilot electro valve, insert and tighten the pilot orifice nut from the old valve into the top of the new pilot Electrovalve.
2. Insert the rubber o-ring into the groove of the electro valve housing on the gas valve. Failure to do this may result in a gas leak.
3. Insert electro valve into the electro valve housing on the gas valve making sure to align the screw holes between the two.
4. Reconnect wire from the electronic control box to the electro valve.
5. Turn on the gas supply to the water heater and check for gas leaks.
6. Return the heater to service. If the unit does not ignite at first, try cycling the water off and on to make sure that air has been sufficiently bled from the gas line. **Note:** It may take several cycling attempts to purge all the air out.

FIGURE 1



Pilot electro valve

Burner electro valve